

GEORGETOWN

SLATE

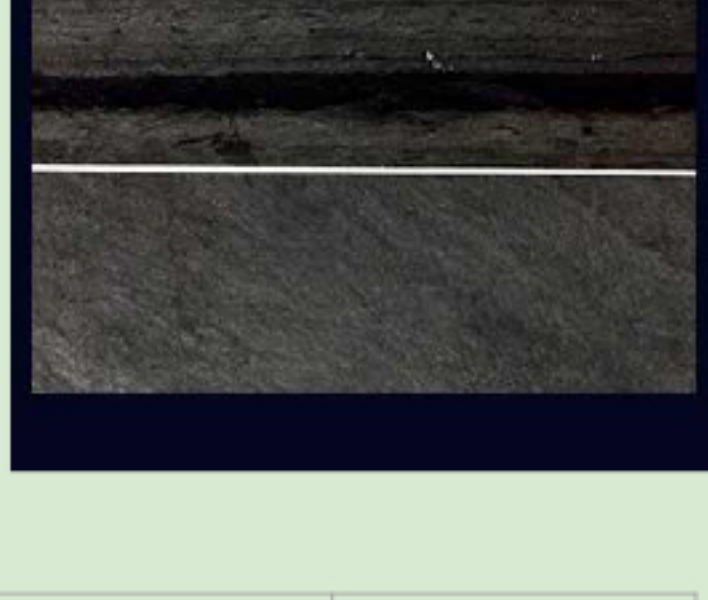
DOMESTIC SLATE SPECIFICATIONS SHEET

15565 Wright Brothers Dr.
Addison TX. 75001
Sales - (949) 294-3052

Vermont Black

Includes a range of slate types from a full 1/4" to 1" thick, textured slate with a medium to dark gray color and darker linear markings to a medium-texture dark gray to black slate without lines. A small showing of buff and brown may appear.

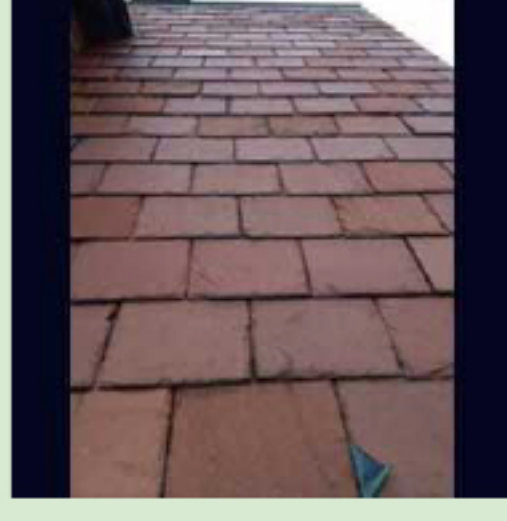
Comparable Roofing Slates: Occasionally referred to as mottled gray/black or dark strata gray/black



Property	Value	ASTM Test Method	ASTM Grade
Modulus of Rupture	611 lbs. at 0.253 in	C-120 -06	S1
Absorption	0.163%	C-120 -06	S1
Weather Resistance	0.0019 in.	C-217 -94	S1

New York Red

A bright red that will not change color, this dense and very hard slate is quarried in Washington County, New York, and is commonly found in roof applications with color patterns and designs. Unfading Red can be a drier, more brittle slate, making it more expensive to produce and contributing to its higher cost.



Property	Value	ASTM Test Method	ASTM Grade
Modulus of Rupture	871 lbs. at 0.284 in	C-120 -06	S1
Absorption	.248%	C-120 -06	S1
Weather Resistance	.0018 in.	C-217 -94	S1

Semi-Weathering Grey/Green

A historically popular and high-volume product. A green or gray/green color when first quarried; after application to the roof and exposure to the elements, a percentage of these slates weather to shades of buff and brown. The degree of weathering can range from less than 10% to more than 90%. With Semi-Weathering Gray/Green roofing slate, a subtle range of color, texture and weathering characteristics can be expected



Property	Value	ASTM Test Method	ASTM Grade
Modulus of Rupture	611 lbs. at 0.253 in	C-120 -06	S1
Absorption	0.163 %	C-121 -06	S1
Weather Resistance	.0019 in.	C-217 -94	S1

Unfading Green

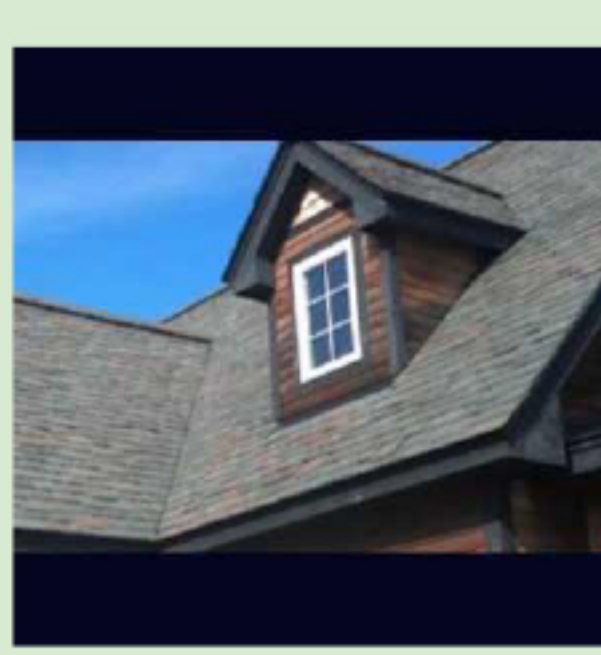
Found mainly on the northern portion of the slate producing region. This slate exhibits shades ranging from a bright green to gray/green tones that will not weather. This also is a medium-textured slate



Property	Value	ASTM Test Method	ASTM Grade
Modulus of Rupture	1037 lbs. at 0.306 in	C-120 -06	S1
Absorption	0.163 %	C-121 -06	S1
Weather Resistance	.0004 in.	C-217 -94	S1

Clear Grey

Clear gray or gray with small black markings when extracted from the quarry, a percentage of these slates may weather to tones of buff and brown.



Property	Value	ASTM Test Method	ASTM Grade
Modulus of Rupture	611 lbs. at 0.253 in	C-120 -06	S1
Absorption	0.163 %	C-121 -06	S1
Weather Resistance	.0019 in.	C-217 -94	S1

Strata Gray

A medium gray slate with black stripes also known as Mottled Gray/Black. This medium to heavy-textured slate usually shows some buff and brown weathering.

Comparable Roofing Slates: Occasionally referred to as mottled gray/black or dark strata gray/black



Property	Value	ASTM Test Method	ASTM Grade
Modulus of Rupture	611 lbs. at 0.253 in	C-120 -06	S1
Absorption	0.163%	C-121 -06	S1
Weather Resistance	.0019 in.	C-217 -94	S1

Mottled Purple

Green and purple combine to form unique patterns in each slate. Some pieces are mostly purple and may be called "Dark Mottle," while at the other end of the range green predominates and can be known as "Light Mottle" or "Reverse Mottle." Unfading Mottled Green and Purple does not weather and is a medium-textured slate.



Property	Value	ASTM Test Method	ASTM Grade
Modulus of Rupture	616 lbs. at 0.249 in	C-120 -06	S1
Absorption	0.139 %	C-121 -06	S1
Weather Resistance	0004 in.	C-217 -94	S1

Royal Purple

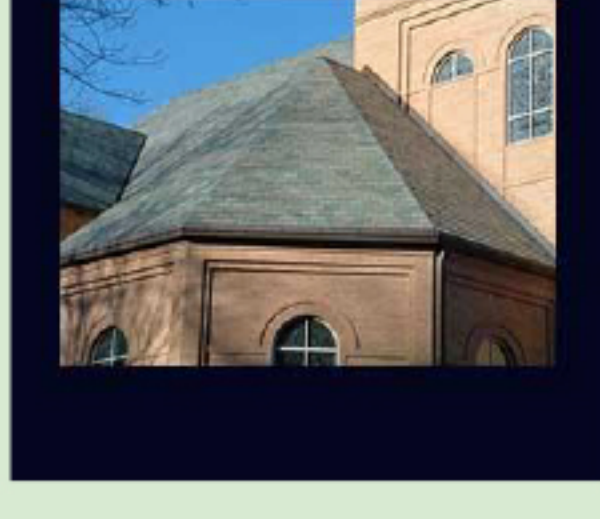
A deep purple slate, at times almost burgundy in color, which may have occasional green marks or inclusions. Royal Purple is a less common, low volume slate type of medium texture



Property	Value	ASTM Test Method	ASTM Grade
Modulus of Rupture	616 lbs. at 0.249 in	C-120 -06	S1
Absorption	0.139 %	C-121 -06	S1
Weather Resistance	0004 in.	C-217 -94	S1

Unfading Grey/Green

Vermont Unfading Gray/Green slate is a more subtle green than the Grassy with small gray markings in the slate. This slate weathers very little and is beautiful used alone on the entire roof, or as an accent color in a blend.



Property	Value	ASTM Test Method	ASTM Grade
Modulus of Rupture	684 lbs. at 0.274 in	C-120 -06	S1
Absorption	0.200%	C-121 -06	S1
Weather Resistance	.0006 in	C-217 -94	S1